



INTRODUCTION .....3  
TOOL KIT CONTENTS.....4  
COMMON PRINCIPLES AND BEST PRACTICES .....



# TOOL KIT CONTENTS

This tool kit includes three model memoranda of understanding, two letter templates, and an informational brochure for treatment court participants and their loved ones. You can download Word versions of these documents from <https://www.ndci.org/resource/training/medication-assisted-treatment/moud-toolkit/> and customize them as needed.

## **Partner Agencies Agreement.** Appendix A

VbagT\af`T` bVK` X` beTaWh` bYhaVKefgTaWwZ`  
fcXVM\az`g`X` hgT`T`TZEXW`hcb`ab`XF`  
TaWefcbaf`U`g`Xf`bYg`X`cTeg`XeaZ`TZaVXf`  
j`be`aZ`a`g`X`g`XTg`XagVbheg`G`X`checbfX`  
bYg`f`TZEX`Xag`f`g`Xaf`he`g`TgT`g`T`  
`X`UXef`Te`ba`g`X`fT`X`cTZ`X`b`bj`  
UXfg`ceT`Vg`VXf`Z`Ta`Ww`ab`gj`be`T`g`V`b`ff`  
checbfXf`be`a`TW`Xeg`Xag`l`ha`W`e`a`X`@`BH7`  
XYXVgi`Xa`Xff`!`F`g`T`Y`ef`cbaf`U`g`Xf`bh`g`a`X`W`a`  
g`X`X`be`Ta`Wh`a`V`h`W`f`V`e`X`a`a`Z`c`Teg`V`c`Tag`f`  
Y`be`g`X`e`cb`ff`U`X`a`V`W`T`g`b`af`Y`be`@`BH7`Z`T`^`a`Z`  
f`h`g`T`U`X`e`X`e`f`f`Z`ba`g`be`a`Z`X`V`W`T`g`b`a`  
Vb`c`T`a`V`X`Z`e`f`cb`a`W`a`Z`T`c`c`e`b`ce`T`g`X`l`g`  
a`Ye`T`V`g`b`af`Z`W`i`X`ea`Z`Vb`c`X`Xag`T`e`f`X`e`V`X`f`g`  
Y`T`V`g`T`g`f`h`V`X`f`f`j`g`@`BH7`Z`f`X`X`^`a`Z`Y`ha`W`a`Z`Y`be`  
g`X`X`V`W`T`g`b`af`Z`Ta`W`W`K`ag`M`a`Z`d`h`T`X`W`X`V`W`T`  
c`e`b`i`W`K`e`f`!

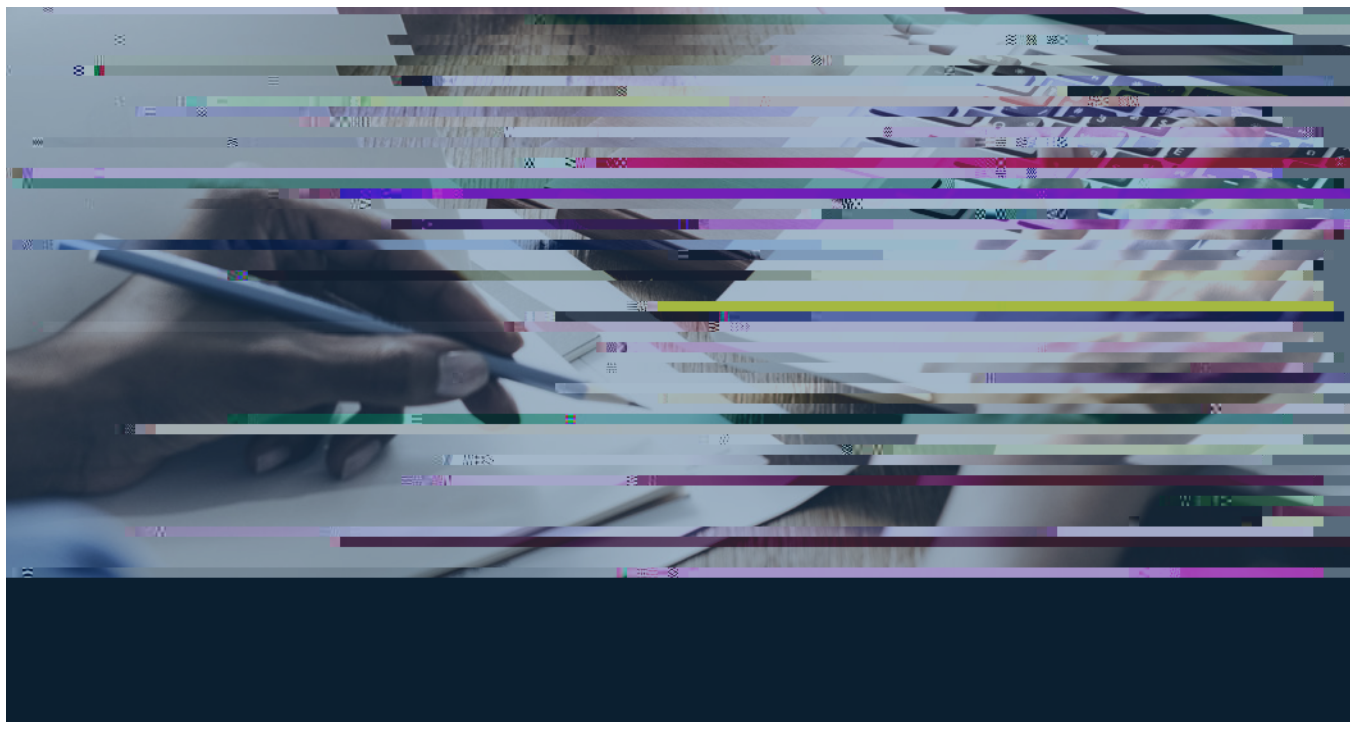
**Recruitment Letter for Medical Providers.**

4ccXaWk'8VbagT'af'T` bVX TU\_X'gk' c\_Igk' YbeT\_XggXeYeb` g' X'geXTg XagVbheg]hVZX'p' cdbfcXVgi X@BH7'cebi VVkef`'agbWbVaZ'g' X' 'p' g' X'cebZef` TaWai YgaZ'g' X' 'p` XXgj' g' g' X' gkT` TaWbaf VVke'cebi VVaZ'aXXWkfXe' VVf' Ybe' cTegVcTag!'G[X' XgXefXX^f'p' VV'cX\_Vb` ` ba' ` VVbaVXcgbaf'g' Tg` XWWT\_cetVggbaxef' ` TI [Ti XTUbhggeXTg XagVbhegf ZhaVkefVbeXf' g' TgcTegVcTag' eVXxi X'geXTg XagTaWbg Xe' eX[ TU\gTgi X'fXe' VVf' 'a' Xh'bYgeTWgbaT\_Ve' `aT\_ ]hfgVX'fTaVgbaf ZTaWcobi VVf' TffheTaVXf'g' Tg' geXTg XagVbhegf gTYj \\_j be^Vb\_IUbeTgi X\_I' j' g' g' X` XWWT\_cetVggbaxegp Xa[ TaVX\_Ubg' chU\_V'[ XT\_g' TaWchU\_V'fTYgd' bU]XVgi Xf!'`

**Letter to Jail Officials.**

9aT\_IZ4ccXaWk'9' VbagT'af'T` bVX TU\_X'gk' c\_Igk' YbeT\_XggXe' Yeb` g' X'geXTg XagVbheg]hVZX'p']T\\_by VT\_f' j [ b` TI VVkaI' bec\_IVX haWhX'eXf geVggbaf' ba' @BH7 Ybe'a` Tgkf!GeXTg XagVbhegf` TI ZTg' g' XfZTW' VaV'geUeXY]T\\_fTaVgbaf YbefXebhf' cebZef` 'aYetVgbaf ZTaW' Tal' cTegVcTag' TeX'

haj \\_aZ'p' UXZ'a' beVbagahX` Xg' TWbaX'be' UhceXabec[ 'aX'Ybe'YXTe'bYUXaZ'gT'^Xa' bYg' X' ` XWWTgba'ceXVc'p'hf\_I' TaWfhYXeaZ' TVhgk' j' g' Vefj T\_ZVefi 'aZfZ'bebg' Xe` XagT\_[ XT\_g' ' fl` c'p` f'ff[ Te' T'XgT\_IZ%#\$\*fl' ai b\_hagT'd' j' g' Vefj T\_Yeb` 'bc'bVWf' WhaZ'Vhf'p'W' VTa'UX' ` XWWT\_I'[ TmTeWbhfZeXWhVXf'g' X'\_X\_Y' bbWg' Tg' 'aV'b' A



# COMMON PRINCIPLES AND BEST PRACTICES

The documents in the appendices are written for different parties and contexts and emphasize different issues, and the language is simplified for participants and their significant others. However, common principles and best practices are reflected in each of

fl` cđ` fZbc`bVWefi`aZfZbeTffbVTgKW` XagT`  
[XT`đ`fi` cđ` f`fhV[ Tf`WkceXffbaZ`eegT`U`đ`Z`  
beTa[ XWbaV`fibff`bYc`XTfheXf`4cc`aZ`[ V[ ž`  
`TZa`đhVX`fTaVgbaf`Ybecb`bWhf`X`cebeđ`đ`f`  
Xi`X`bYV`a`VT`f`đT`U`đ`mT`gba`f`Y`X`l`đ`đeZZXe`  
YX`aZf`bY`XTeaXW[ Xc`XffaXff`ZVThf`X`đ`X`  
đeXTg` XagVbhegđT` `đ`hf`X`hc`đ`đ`Ti`T`U`X`  
fTaVgbaf`ceX` T`đeX`l`ZTaWj` bef`Xa`bhg`b` Xf!

### Treatment Court Responsibilities

GeXTg` XagVbhegf`đT`Y[ Ti`X`VegVT`\_eXf`cbaf`U`đ`đXf`  
YbeXaf`heaZ`đ`X`fTY`TaWXYXVđi`X`hf`X`bY`@BH7!`  
`a`T`W`V`g`b`a`đ``b`a`đ`b`e`a`Z``X`W`V`T`g`b`a`V`b`c`\_`T`a`V`X`  
TaWeXf`c`b`a`W`a`Z`đ``a`YeT`V`g`b`a`f`Z`b`đ`X`e`\\`c`b`e`đ`T`a`g`  
W`h`g`X`f``a`V`h`W`k`f`V`e`X`a`a`Z`c`T`e`đ`V`c`T`a`g`c`b`T`V`đi`X`l`  
Y`b`e`c`b`f`f`U`X``a`W`V`T`g`b`a`f`Y`b`e`@BH7Z` T`^`a`Z`  
f`h`đ`T`U`X`e`X`X`e`T`\_`f`j`[ X`e`X`a`W`V`T`g`X`V`Z` bđi`T`đ`a`Z`  
c`T`e`đ`V`c`T`a`g`T`V`V`X`c`g`f`a`V`X`b`Y`e`X`X`e`T`\_`f`Z`V`X`i`X`e`a`Z`  
V`b`c`\_`X` XagT`d` Vbhaf`X`a`Z`TaWf`b`V`T`\_`f`X`e`i`V`X`f`đ`  
Y`T`V`\_`đ`T`g`k`f`h`V`X`f`f`b`a`@BH7Z`TaWj` be`^`a`Z`đ``a`W`  
T`W`k`d`h`T`g`k`Y`h`a`W`a`Z`Y`b`e`@BH7`TaWdhT`\_`X`W` X`W`V`T`\_`  
c`b`i`V`X`e`f!

**Screening and referral.** 4`\_`c`T`e`đ`V`c`T`a`g` XagXeaZ`  
đ`X`đeXTg` XagVbhegf`[ bh`W`U`X`f`V`e`X`a`X`W`T`g`  
`a`đ`^`X`f`T`a`W`đ`X`e`T`Y`g`e`V`đ`X`e`V`\_`a`V`T`\_`c`e`X`f`X`a`đ`T`g`b`a`  
V[ TaZ`X`f`f`Y`b`e`c`b`f`f`U`X``a`W`V`T`g`b`a`f`Y`b`e`@BH7!`  
5`X`V`T`h`X``Tal`đeXTg` XagVbhegf`V`b`abg`[Ti`X`  
T``X`W`V`T`\_`c`e`T`V`g`đ`b`a`X`e`b`a`f`đ`Y`Z`đ`f`Y`h`a`V`g`b`a`  
`Ti`U`X`c`X`e`b`e`X`W`U`i`T`đ`T`a`X`W`f`b`V`T`\_`j`be`X`e`Z`  
c`f`l`V[ b`b`Z`f`g`Z`V`X`e`đ`X`W`T`V`W`V`g`b`a`V`b`h`a`f`X`b`e`Z`b`e`  
b`đ`X`e`V`\_`a`V`T`\_`l`V`e`X`W`k`a`g`T`\_`X`W`c`b`Y`X`f`f`b`a`T`\_`l`G[ X`  
f`V`e`X`a`a`Z`f`[ bh`\_`W`T`f`f`X`f`f`j`[ X`đ`X`e`đ`X`c`T`e`đ`V`c`T`a`g`  
[ Tf`Ta`BH7`TaW`f`T`g`e`f`^`Y`b`e`f`X`e`b`h`f`e`X`X`e`V`h`f`f`b`a`f`  
Y`b``đ`đ`f`V`W`b`a`V`k`e`Z`f`h`V[ Tf`bi`X`e`V`b`f`X`Z`đeXTg` Xag`  
V`b`c`b`h`đ`Z`b`e`a`b`a`e`X`f`c`b`a`f`X`đ`đeXTg` Xagj`đ`bhg`  
@BH7!`CT`e`đ`V`c`T`a`g`f`V`e`X`a`a`Z`c`b`f`đi`X`f`[ bh`\_`W`  
U`X`e`X`X`e`W`T`f`f`b`b`a`T`f`c`b`f`f`U`X`đ`T`d`h`T`\_`X`W`  
`X`W`V`T`\_`c`e`T`V`g`đ`b`a`X`e`Y`b`e`T`V`b`c`e`X[ X`a`f`i`X``X`W`V`T`\_`  
Xi`T`h`T`g`b`a`Ta`W`W`X`g`k`e``a`T`g`b`a`b`Y`đ`X`e`f`h`đ`T`U`\_`đ`  
Y`b`e`@BH7!`8`k`T``c`\_`X`f`b`Y`ch`U`\_`V`l`Ti`T`\_`U`\_`X`\_`Ta`W`  
i`T`\_`V`T`g`k`W`f`V`e`X`a`a`Z`đ`b`\_`f`đ`T`g`T`e`X`V`b```b`a`\_`h`f`X`W`  
Y`b`e`đ`X`f`X`c`h`e`c`b`f`X`f``a`V`h`W`X`Z`U`h`g`T`e`X`a`b`g`\_`\_`đ`X`W`đ`b`Z`  
đ`X`Y`b`\_`b`j`a`Z`-

### Screening for Opioid Use Disorder

[Rapid Opioid Dependence Screen \(RODS\)](#)

[ffXX`đ`X`T`c`c`X`a`W`k``a`đ`f`T`e`đ`V`\\_`X`f`l](#)

[Texas Christian University \(TCU\) Drug Screen-5-Opioid Supplement](#)

### Screening for Opioid Withdrawal Symptoms

[Clinical Institute Narcotic Assessment \(CINA\) Scale for Withdrawal Symptoms](#)

[Clinical Opiate Withdrawal Scale \(COWS\)](#)

[Subjective Opiate Withdrawal Scale \(SOWS\)](#)

### Screening for Opioid Cravings

[Brief Substance Craving Scale \(BSCS\)](#)

**Motivating acceptance of referrals.** A`b`g`T`\_`  
c`T`e`đ`V`c`T`a`g``a`X`X`W`a`Z`@BH7`j`\_`\_`U`X``b`đi`T`g`k`W`  
đ`T`W`X`c`g`T`e`X`X`e`T`\_`l`F`b``X`c`T`e`đ`V`c`T`a`g```T`l`  
[ Ti`X`[ X`T`e`W`a`X`Z`T`g`i`X`b`e`f`g`Z`T`g`m`a`Z`V`b```X`a`g`  
T`U`b`h`g`@BH7``Y`b`e`X`k`T``c`\_`X`Z`đ`T`g`\_`đ`X`e`X`l`  
f`h`U`f`g`đ`g`k`f`b`a`X`T`W`W`V`g`b`a`Y`b`e`T`a`b`đ`X`e`b`e`^`X`X`c`f`  
c`X`b`c`\_`X`W`k`c`X`a`W`k`a`g`b`a`f`h`U`f`g`f`a`V`X`f``a`V`k`a`g`\_`l`!  
4`đ`bhZ[ `W`X`V`W`a`Z`j`[ X`đ`X`e`đ`đ`T`^`X``X`W`V`T`g`b`a`f`  
T`i`b`h`a`đ`e`l`V[ b`V`X`Z`X`k`c`\_`b`e`a`Z`Ta`W`e`X`T`\_`đ`Z`đ`f`g`a`Z`  
đ`X`f`X`f`X`a`đ``X`a`g``f`V`e`đ`V`T`\_`l`7`X`f`c`\_`g`k`T`e`X`c`T`g`k`W`  
[ Y`đ`đ`b`Y`T`\_`X`W`T`g`k`c`g``a``X`W`V`T`g`b`a`Z`e`X`  
V`b`h`a`f`X`\_`a`Z`Z`f`b``X`c`T`e`đ`V`c`T`a`g```T`l`V`\_`a`Z`đ`đ`X`  
T`\_`Z`b`e`Z`a`b`đ`a`Z`U`X`\_`Y`đ`T`g`đ`X`e`X`f`b`a`\_`b`a`X`e`b`T`W`đ`  
f`h`W`X`f`f`j`Y[ `a`Z`đ`Ti`b`W`U`X`V`b``a`Z`W`k`c`X`a`W`k`a`g`  
b`a``X`W`V`T`g`b`a`Z`đ`X`l``T`l`^`X`X`c`\_`đ`X`f`X`i`X`f`U`b`h`a`W`  
đ``b`e`X`W`f`g`h`V`đi`X`T`a`W`V`a`Z`X`e`b`h`f`f`h`U`f`g`f`a`V`X`f`!  
9`b`e`f`h`V[ `c`X`e`f`b`a`f`Z`g``T`l`U`X`[ X`c`\_`h`\_`đ`f`c`X`T`^`T`U`b`h`g`

Vt'aUX'cəfVeUXWəb` T'cəi Tg'c[I fW'af'by VX'  
TaW'cXafXWəb` Tal'c[Te` TVI Žg hf' bUi VgaZ'  
g' X'aXXWg' Zb'g' T'fcXVT\_nXW` Xg' TWbaX'V\_aV'  
g' Tg` TI `abgUXVbai XaXagL`\_bVTgXW`

4abg' Xecəb` V'aZ'fgeTgZI` V'g' [Ti X'geXTg' Xag'  
VbhegZ'eTWhTgXf' bebg' XecXef' baf' j [ b' [Ti X'  
fhVXXW'Wba'@BH7` XXgj` Vg' aXj' cTegV'cTag' Ž'  
TV^abj`\_XVZX'g' X'ebj` a` a'gT`\_eXgVXaVX'g' gT'^X'  
` XWVTg'baŽTaW'XfVeUX'g' X'efhUfXdhXag'  
cbf'g'i X'XkcXeXaVXf!'8TV[ cTegV'cTagj [ b'  
fhVXXW'`ba'@BH7`UXVb` Xf`T'cbgXagT`\_cXXe'  
advisor for new participants and can contribute to  
T`Vb\_XVgi X`TWXcgT'aVX'bY@BH7` a`g' X'geXTg' Xag'  
Vbheg` \Xh!

**Communal psychoeducation.** FgZ` TgmaZ'be'  
Vbhag'XecəbWhVgi X` XffTZXf` Yeb` cTegV'cTag'  
YT` V` X` UXef' be'\_bi XWbaXf'Ž` X` UXef' bYg' X'  
fXVZ[ X\_c'eXVbi Xel` Vb` ` ha'g' ŽYX\_bj' g'eXTg' Xag'  
Vbheg' Ž`





TgWfVbhagWYXXf Ybeha'afheXWTaW\_bj žaVb` X'  
aVM Wht\_f!GeXTg XagVbhegf VTa`\_bVTgX'9D; 6f`  
a\_g XeVb` ` ha'g Tg

**Find a Health Center, HRSA**

G[ X'& #5'7dhZ`CeVaz`CdbZeT` `f`T`  
YXWet\_Zbi Xea` XagcdebZeT` `exdh`eaZ`WthZ`  
` TahYTVgheXef`cTegVcTgaZ`a`@XVWTWg`  
cđbi WX`bhg:TgXag` XVWTgbaf`đ`X`Z`U`X`  
[ XT\_g VTex`beZTa`ntgbaf`TaWbg`XeVbi XeXW  
XaggXf`Tgf`Za` VTagL`eXWVXWceVXf!`6bi XeXW  
XaggXf`TeX`g`bf`X`g`Tgf`Xe`X`[ Z[ ] i`h`a`XeTU`X`  
cbch`Tgbaf`ZaV`h`WaZ`[ bfc`gT`f`g`XTgaZ`T`  
disproportionate share of poor and uninsured  
cTgXagf`Zfb`X`Vb` ` ha'g`[ bfc`gT`f`ZTa`WeheT`\_`  
eYXeeT`\_VXagXef!`6bi XeXWXaggXf` TI`UX`exdh`eXW  
đ`cđbi WX`WfVbhagXW` XVWTgbaf`abgbaL`  
đ`@XVWTWexVc`Xagf`UhgT`f`b`đ`ha'af`heXW  
patients and those covered by Medicare or private  
`af`heTa`VX!`@beX`a`Ye` Tgba`TUbhg`\_bVTgaZ`  
Vbi XeXWXaggXf` VTa`UX`bUgT`aXWYeb` -`

**Of ce of Pharmacy Affairs, HRSA**

G[ X` bfgVb` ` ba`eX` \ bA ` e  
U \ XQ a bb ! TTgb f U W VXcaVTW Uk8W a YJgXW  
\ b`

Behavioral Health Treatment Services  
Locator, SAMHSA

Buprenorphine Practitioner Locator, SAMHSA

Opioid Treatment Program Directory,  
SAMHSA

Find a Treatment Facility, SAMHSA

State Opioid Treatment Authorities, SAMHSA

a TWWYgbaŽf\az\_XfgTg' TZXaVXF fFF 4ffYbe'  
fhUfgTaVX'hfX'gXTg XagbYgKa` T'agT'a\_fgf'  
bYVexVWagT\_XWcobi VVef ŽaV\_hWaz'g bfX'  
Thđ benXWđ'cobi VV'by VXžUTfXWgXTg Xagj 'đ'  
UhceXabec[ 'aX!'6b\_XZXf Žha'ì Xef'gXF ŽTaW' XWWT\_'  
fV[ bb\_f 'TeX'XkVX\_XageXfbheVXf 'be\_bVTgaZ'  
fhUfgTaVX'hfX'gXTg XagfcXVT\_fgf!'9aT\_žfgTg'  
beVbhag 'UbTēV' bY[ XT  
beVb a b Vga  
fh%o` gTaVX'a g) Xa



TaWbc bWzX\_IgW begT\_g f7X\_V[ XeXgT\_lZ%#\$( :





@Tebj XZ7!5!Ž: TeWaŽ6!7!Ži 9bkŽ6!?!f%#\$) f! Painting  
the current picture: A national report on drug courts and  
other problem solving courts in the United States.



FgTaZŽ=!f%\$(f!7XTg` TggXef-HaVkefgTaVWaZ[Xeb'a"  
bc\TgX'biXeWbfX'eF^TaWgXfgaZ'cbgKagT\_gh'ceXI Xag  
WKTg f!Addiction, 110f(%fZ%\* &(![ggcf-"Wb\beZ"\$#!\$\$\$"  
TVWV\$% #'

FgTaZŽ=IŽ>X\_X[ Xē@!Ž5Xfg7!Ž@TI XgZF!Ži '@Taa'aZŽi!  
f%#) f!8' XeZ XaVI 'aT\_bkbaX'be[Xeb'a'bi XeWbf X-F[ bh\_W  
yUX Ti T\TUX'bi Xeg X VbhagKe2British Medical Journal,  
333,) \$ ) \$(![ggcf-"Wb\beZ"\$#!\$\$\$&)"U' ]!&&!\*( ), !)\$

FhUfgTaVX'4UhfXi '@XagT\_ XT\_g F Xei Vxf'4W 'aVgeTgba!  
f%\$\*f!Peer support roles in criminal justice settings.  
[ggcf-"j j j !hfYXWh"VUVf" [\_c"gtV"WbVh` Xag"  
UX[ Ti 'beT\_ž XT\_g VTex" cXXēb\_Xf žV]žf XggaZf!cVW

FhUfgTaVX'4UhfXi '@XagT\_ XT\_g F Xei Vxf'4W 'aVgeTgba!  
f%\$, f!Use of medication-assisted treatment for opioid use  
disorder in criminal justice settings fi ; F'ChU!A b!C8C\$, ž  
@4GHF86=Ff![ggcf-"j j j !fT` [fT!Zbi"exfbheVX"XUc"  
hfXž XVWTgbažTfffgXVgXTg Xagbc'bWñfXžWf beVXē  
Ve\ 'aT\_žhfgVXžf XggaZf

FhUfgTaVX'4UhfXTaW@XagT\_ XT\_g F Xei Vxf'  
4W 'aVgeTgba! f%#%#f!Medications for opioid use disorder:  
Treatment Improvement Protocol (TIP) 63



- B. Selecting the proper medication dosage and deciding whether to reduce the dosage or discontinue the medication are medical decisions to be made by a trained and lawfully credentialed medical provider in consultation with the participant. Nonmedically-trained members of the**





- D. Punitive sanctions will ordinarily not be imposed for continued use of illicit opioids until participants have reached a therapeutic dosage of the medication as determined by the prescribing medical provider and are no longer experiencing withdrawal symptoms, opioid cravings, or associated mental health symptoms such as depression or anhedonia. Prior to this level of clinical stabilization, the indicated response to continued illicit opioid use will ordinarily include adjustments to the medication regimen if medically indicated, addition of complementary counseling or monitoring services, person or place restrictions, curfews, or low-magni-



## **IX. Identifying Providers and Funding for MAT**

- A. The treatment court team will make all reasonable efforts to identify competent and lawfully qualified MOUD providers in the local community, including querying online directories of medical providers and treatment agencies specializing in addiction medicine or addiction psychiatry, and reaching out to the single state agency for substance use treatment, state or county boards of health and medical societies, and local colleges, universities, and medical schools.
- B. Case managers or benefits assistants working with the treatment court will identify and help enroll participants eligible for Medicaid or other third-party reimbursement for MOUD.
- C. The treatment court team will make all reasonable efforts to obtain grant or other external funding for MOUD if available, such as applying for funds from state block grants or appropriations, contacting federally qualified health centers (FQHCs) offering discounted medications for uninsured and low-income individuals, attempting to negotiate reduced-price medications from pharmaceutical companies, and reaching out to covered entities offering reduced medication rates for specified vulnerable populations under the federal 340B Drug Acquisition Program.



## MEMORANDUM OF UNDERSTANDING

Medical Practitioners Prescribing Medications for Opioid Use Disorder for  
Participants in the \_\_\_\_\_ Treatment Court

### **I. Access to Medications for Opioid Use Disorder**

- A. The \_\_\_\_\_ Treatment Court is committed to providing safe and effective treatments for substance use disorders while safeguarding participant welfare, public safety, and the fair administration of justice.
- B. Medications for opioid use disorder (MOUD), including methadone, buprenorphine (e.g., Suboxone, Subutex).





5. Symptom improvement, including changes in opioid cravings, withdrawal symptoms, and associated mental health symptoms such as depression, boredom, irritability, or anhedonia
6. Results from PDMP reports indicating whether the participant obtained any unauthorized prescription from another provider for a controlled medication
7. Any efforts by the participant to tamper with or invalidate drug or alcohol tests if such tests are performed

- F. The medical provider agrees to respond within 48 hours to questions or concerns from treatment court staff about a participant's apparent lack of responsiveness to the treatment plan, possible medication side effects, and suspected misuse or diversion of the medication. Medical providers will respond as soon as practicable to any report of serious or life-threatening symptoms and will provide treatment court staff with emergency instructions and contact information for emergency services to be used in the event of a medical 9 (e)-09 (e)-04\_1 1 Tf0rT0.265n467SLK



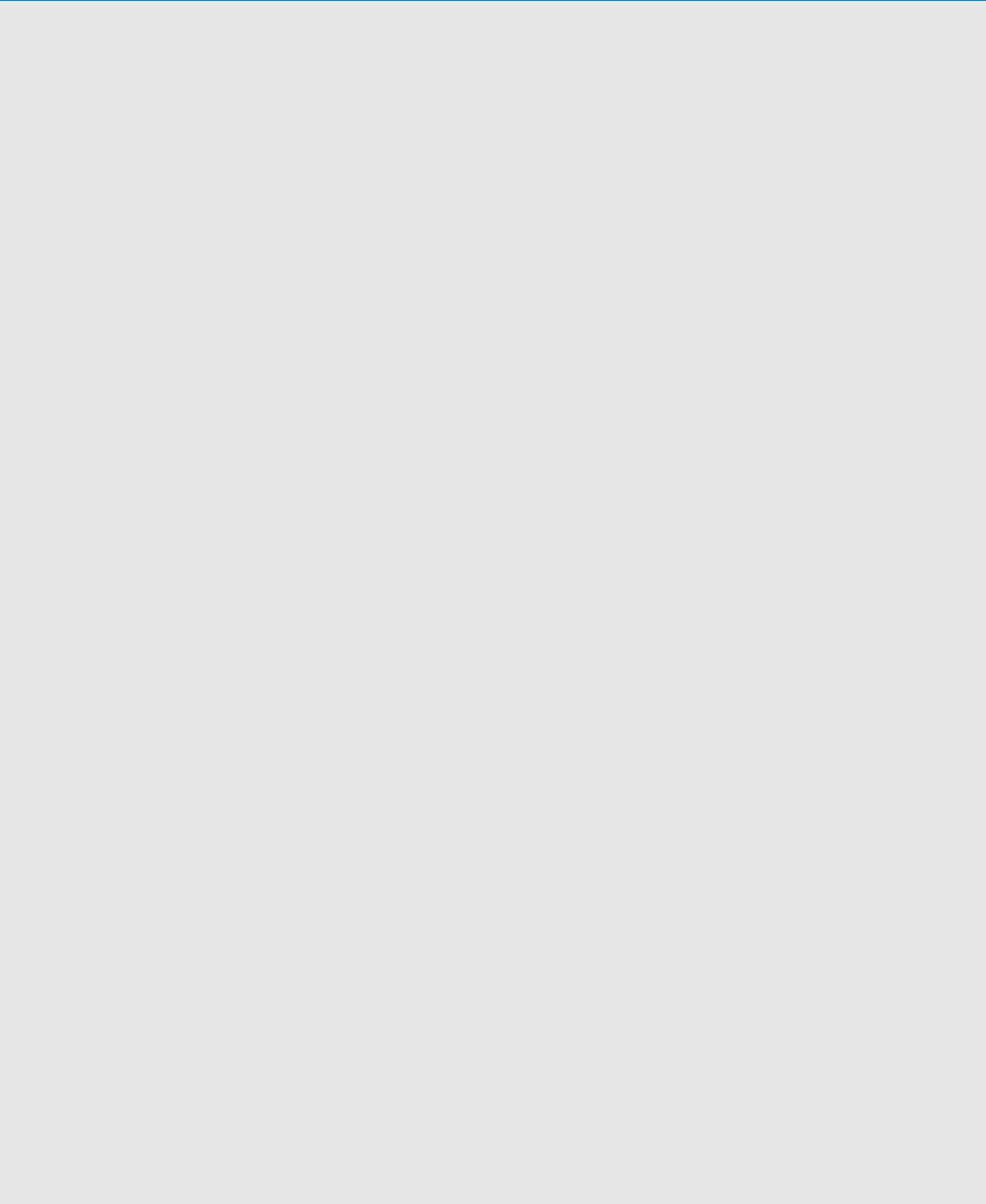
## **PARTICIPANT AGREEMENT**

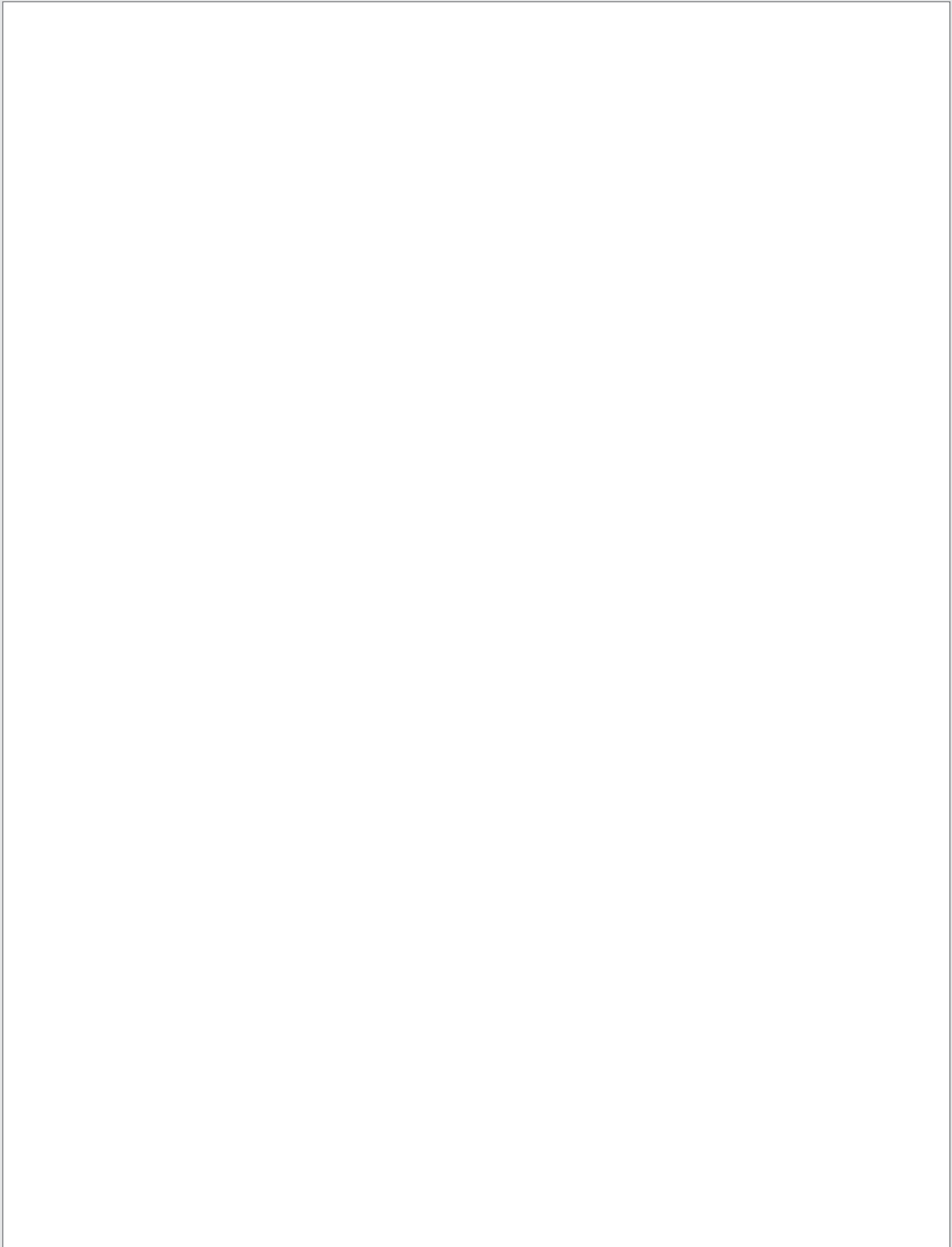
Medications for Opioid Use Disorder in the \_\_\_\_\_ Treatment Court

We are asking you to read this form (or have it read to you) and sign it before starting or to keep

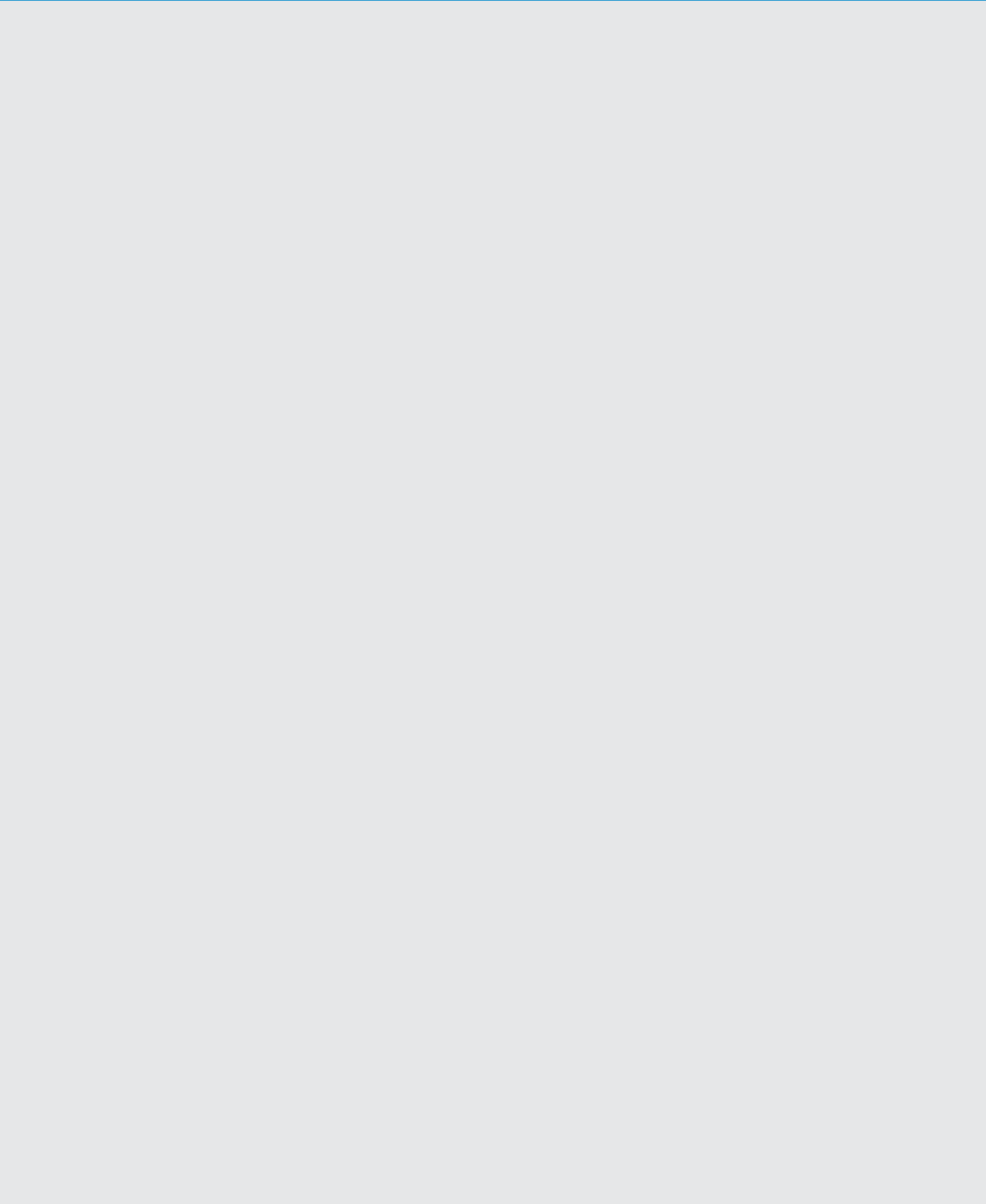






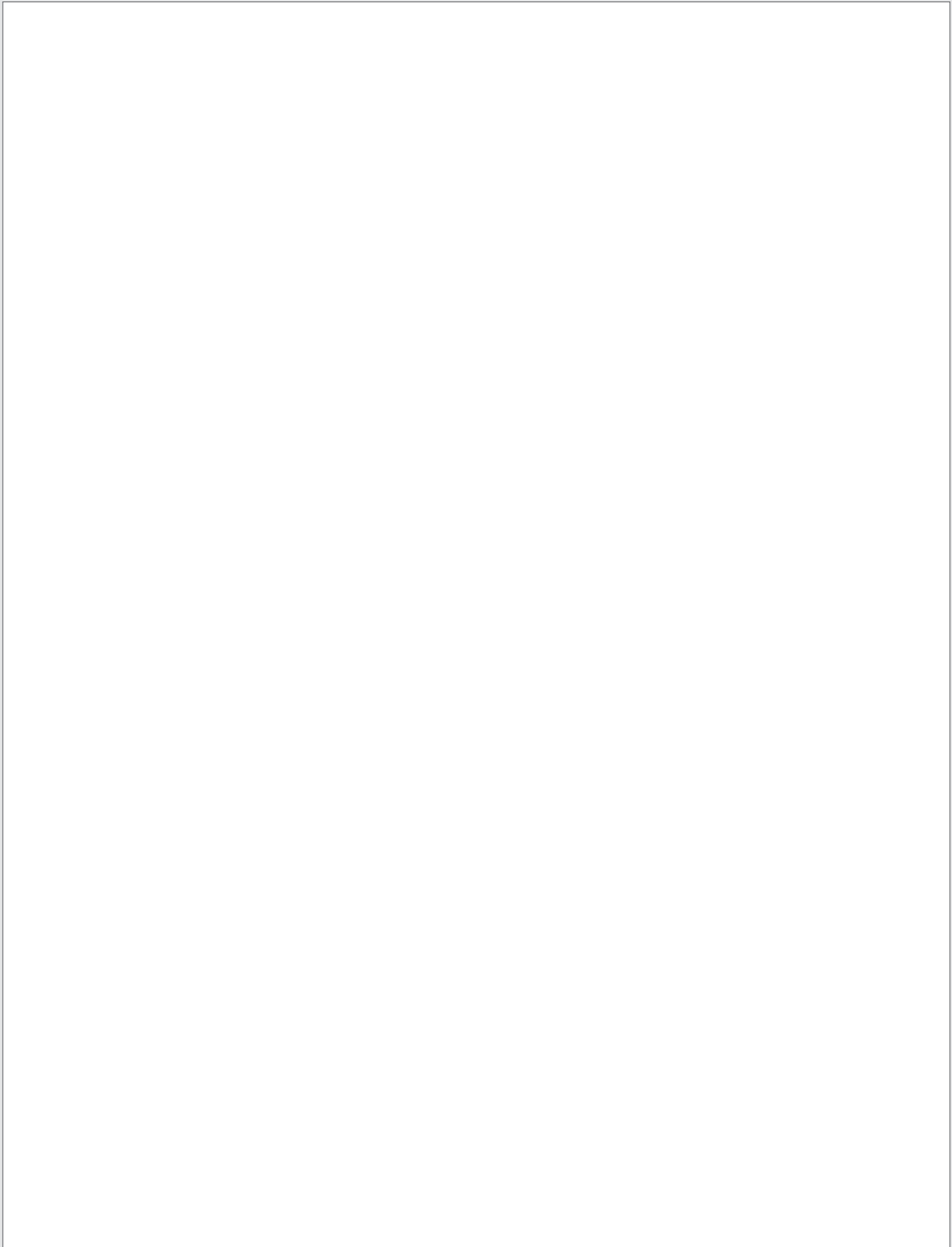


- **Peer mentors.** The treatment court may pair you up with a peer mentor or peer recovery support specialist. Peer mentors are people with lived experience who understand MOUD and may once have been involved with the criminal justice system themselves. They have been trained in how to be helpful and can help you deal with doctors, find ways to pay for MOUD, take your medication the right way, make it to your appointments, and do well in the program and after you leave.
- **Recovery groups.** People in the treatment court are required to go to self-help groups such





Dear \_\_\_\_\_:



G[ Y`XgXeG8@C?4G8VTa'UX` bWk XWTF`  
TccðceTg'ð'eTfX'VbaVXeaf j`g'JT\bY VT\_f`  
j [b` TI`cð[ Ug@BH7'beT'cTegVh\_I'e`  
`XVWTgba`a`g`Xe`afgghgba`be`Xdh`eX`a` Tgf`  
ð`V[ TaZX` XVWTgbaf`ðhgaXl`begTcXeg`X`  
`XVWTgba`VbfTZX!G[ X`agXagf`ð`UXZ`a`T`  
Vb\_UbeTgi`X`WfVhff`ba`j`g'JT\bY VT\_f`eTg`Xe`  
g`Ta`VeXTg`T`VbagXagbhf`Tg` bfc[ XeX!

G[ Y`G8@C?4G8VTa`T\_f'b'UX` bWk XWXTWl`Ybe`  
hfX'Ul`cTegVcTag`ZWD`A`A` F`h`bag`





<sup>1</sup> See, e.g.,